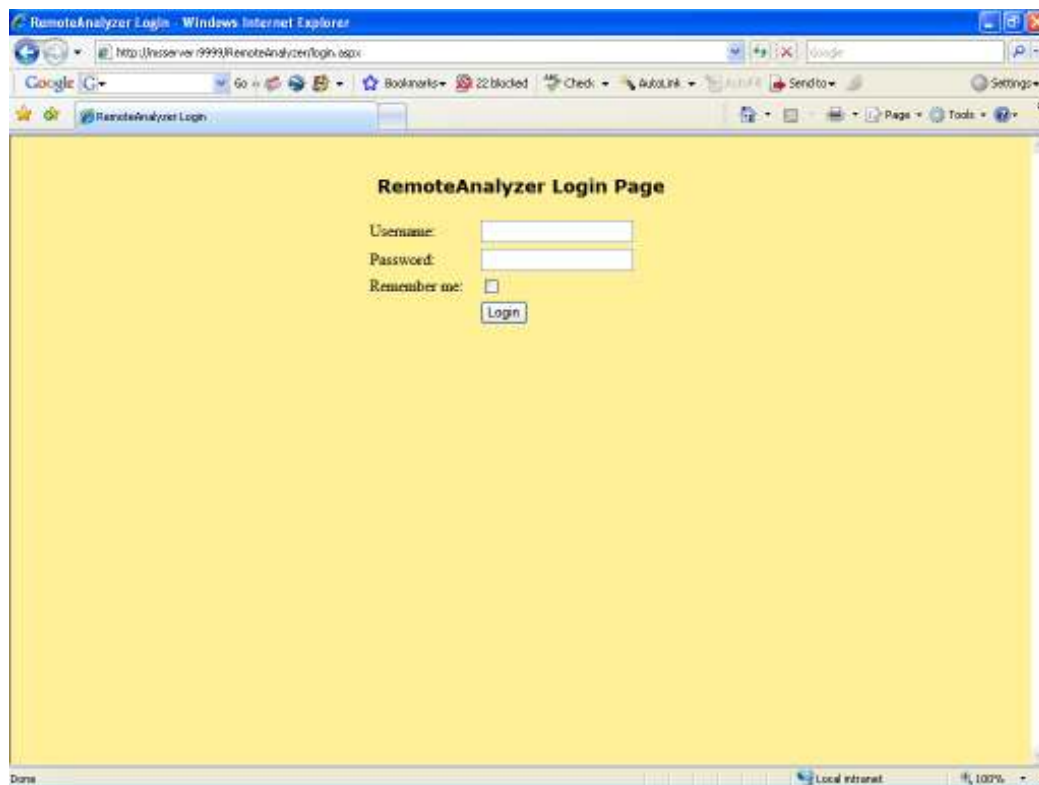


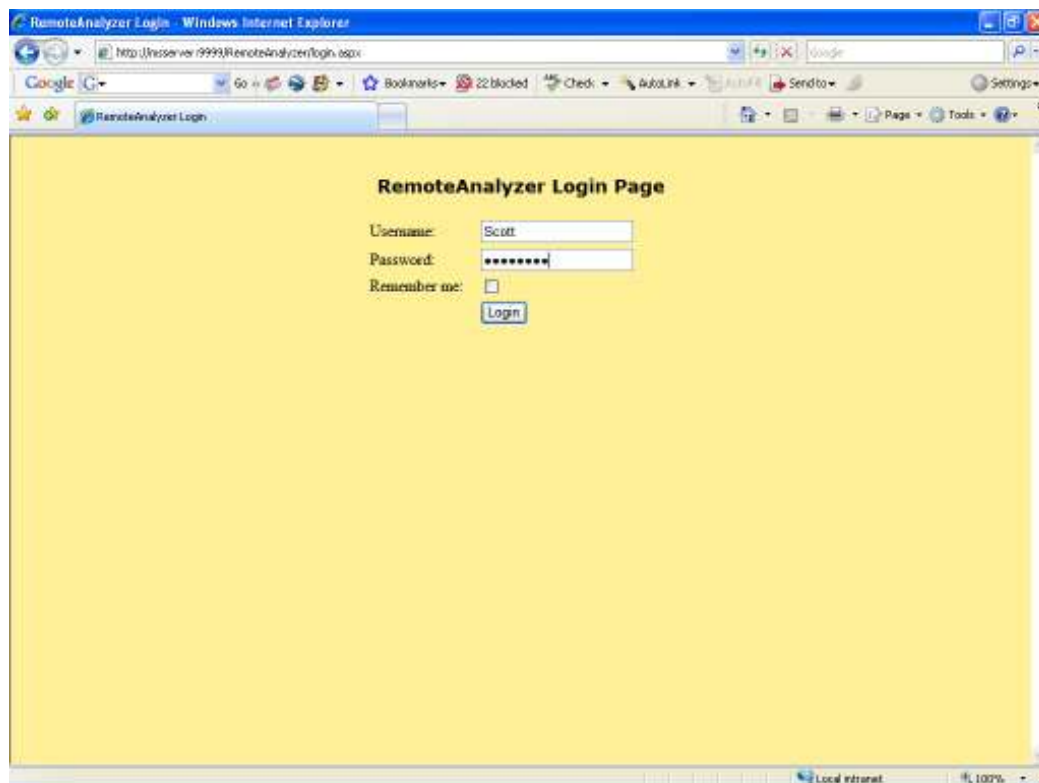
RemoteAnalyzer (RA) Data Review

Open Internet Explorer on any PC within Chemistry (you can use the Login PCs in the MS lab – these will already be linked to RA).

Enter RA address <http://152.78.196.118/RemoteAnalyzer/login.aspx>

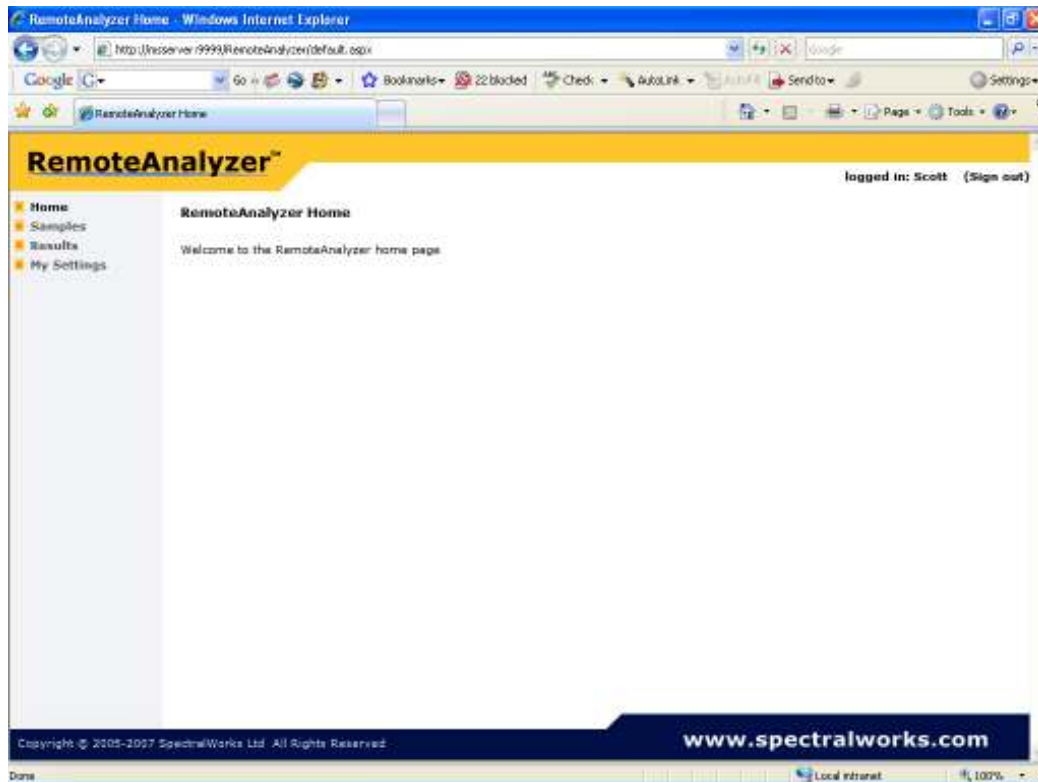


Enter your Username and Password

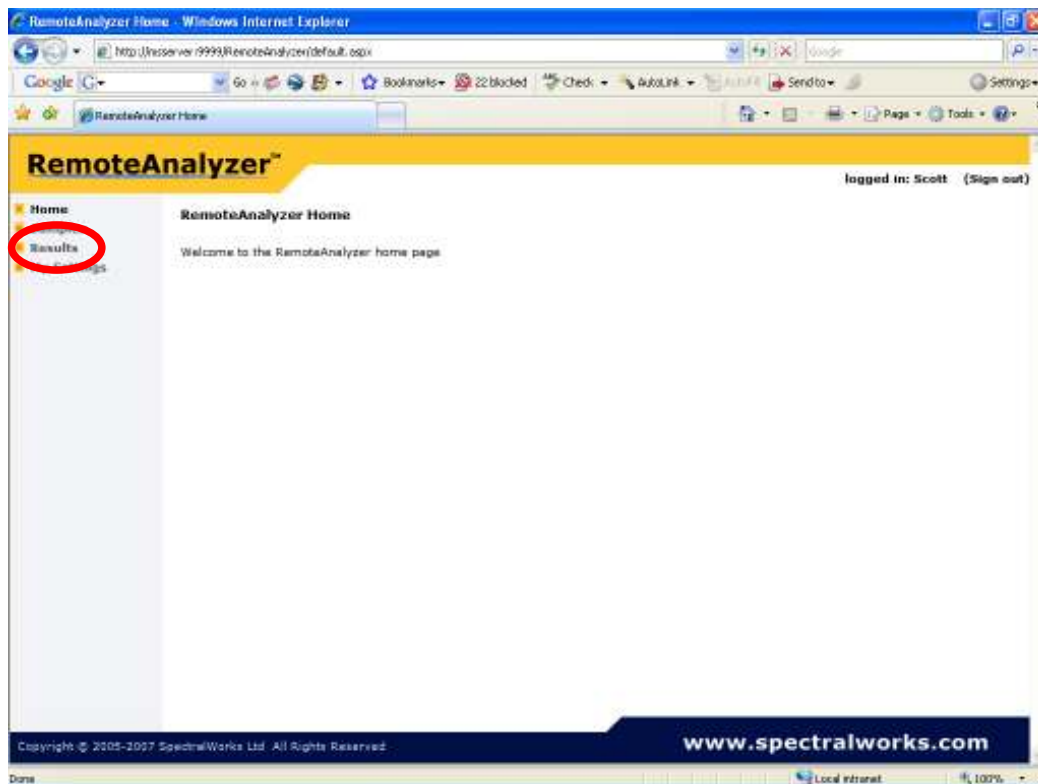


RemoteAnalyser (RA) Data Review

Now login to your account

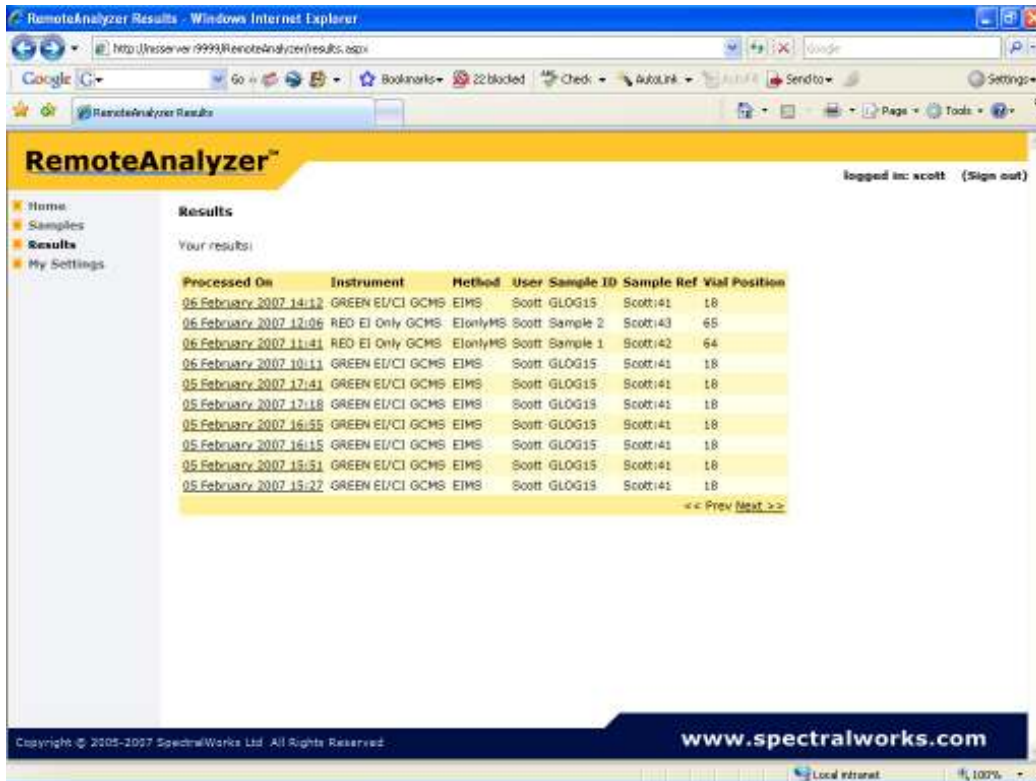


Click on Results



Here you should see all the results for your samples

RemoteAnalyser (RA) Data Review



RemoteAnalyser Results - Windows Internet Explorer
http://ns1server19999.RemoteAnalyser/results.aspx

RemoteAnalyser™
logged in: scott (Sign out)

Home
Samples
Results
My Settings

Results
Your results:

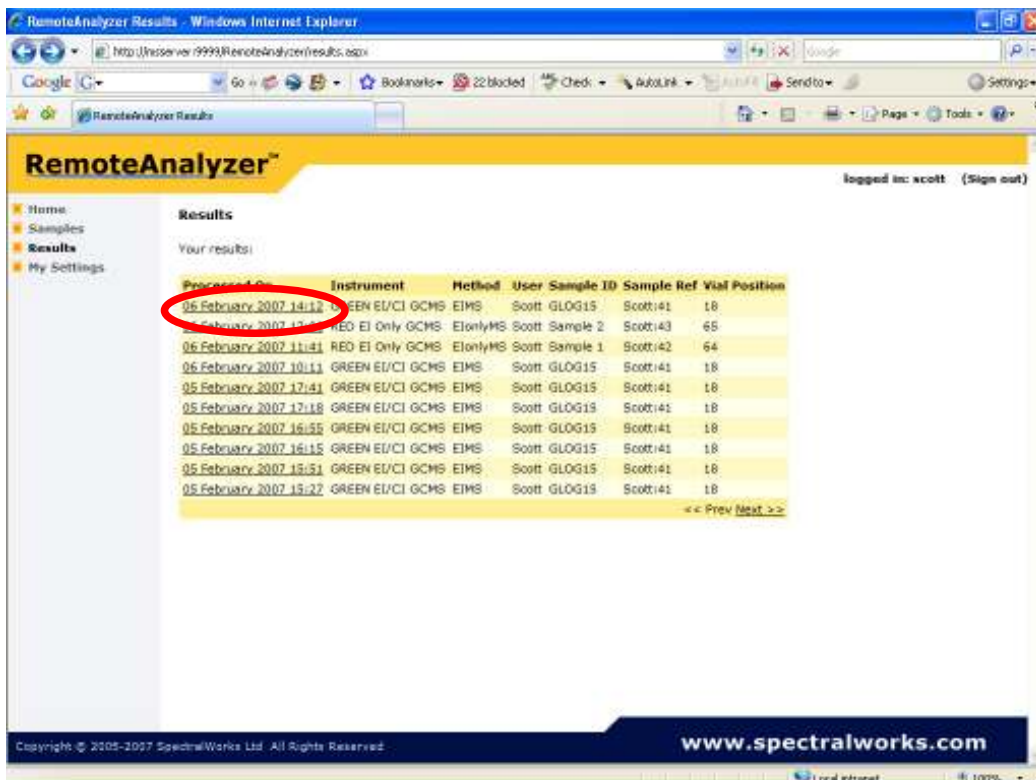
Processed On	Instrument	Method	User	Sample ID	Sample Ref	Vial Position
05 February 2007 14:12	GREEN EI/CI GCMS	EIMS	Scott	GLOG15	Scott:41	18
05 February 2007 12:06	RED EI Only GCMS	EIonlyMS	Scott	Sample 2	Scott:43	65
05 February 2007 11:41	RED EI Only GCMS	EIonlyMS	Scott	Sample 1	Scott:42	64
05 February 2007 10:11	GREEN EI/CI GCMS	EIMS	Scott	GLOG15	Scott:41	18
05 February 2007 17:41	GREEN EI/CI GCMS	EIMS	Scott	GLOG15	Scott:41	18
05 February 2007 17:18	GREEN EI/CI GCMS	EIMS	Scott	GLOG15	Scott:41	18
05 February 2007 16:55	GREEN EI/CI GCMS	EIMS	Scott	GLOG15	Scott:41	18
05 February 2007 16:15	GREEN EI/CI GCMS	EIMS	Scott	GLOG15	Scott:41	18
05 February 2007 15:51	GREEN EI/CI GCMS	EIMS	Scott	GLOG15	Scott:41	18
05 February 2007 15:27	GREEN EI/CI GCMS	EIMS	Scott	GLOG15	Scott:41	18

<< Prev Next >>

Copyright © 2005-2007 SpectralWorks Ltd. All Rights Reserved
www.spectralworks.com

Note under instrument you will see the description of the mass spectrometer used and next to it the ionisation method information. Under Sample ID you will find your reference code.

Click on the data and time entry to review the data



RemoteAnalyser Results - Windows Internet Explorer
http://ns1server19999.RemoteAnalyser/results.aspx

RemoteAnalyser™
logged in: scott (Sign out)

Home
Samples
Results
My Settings

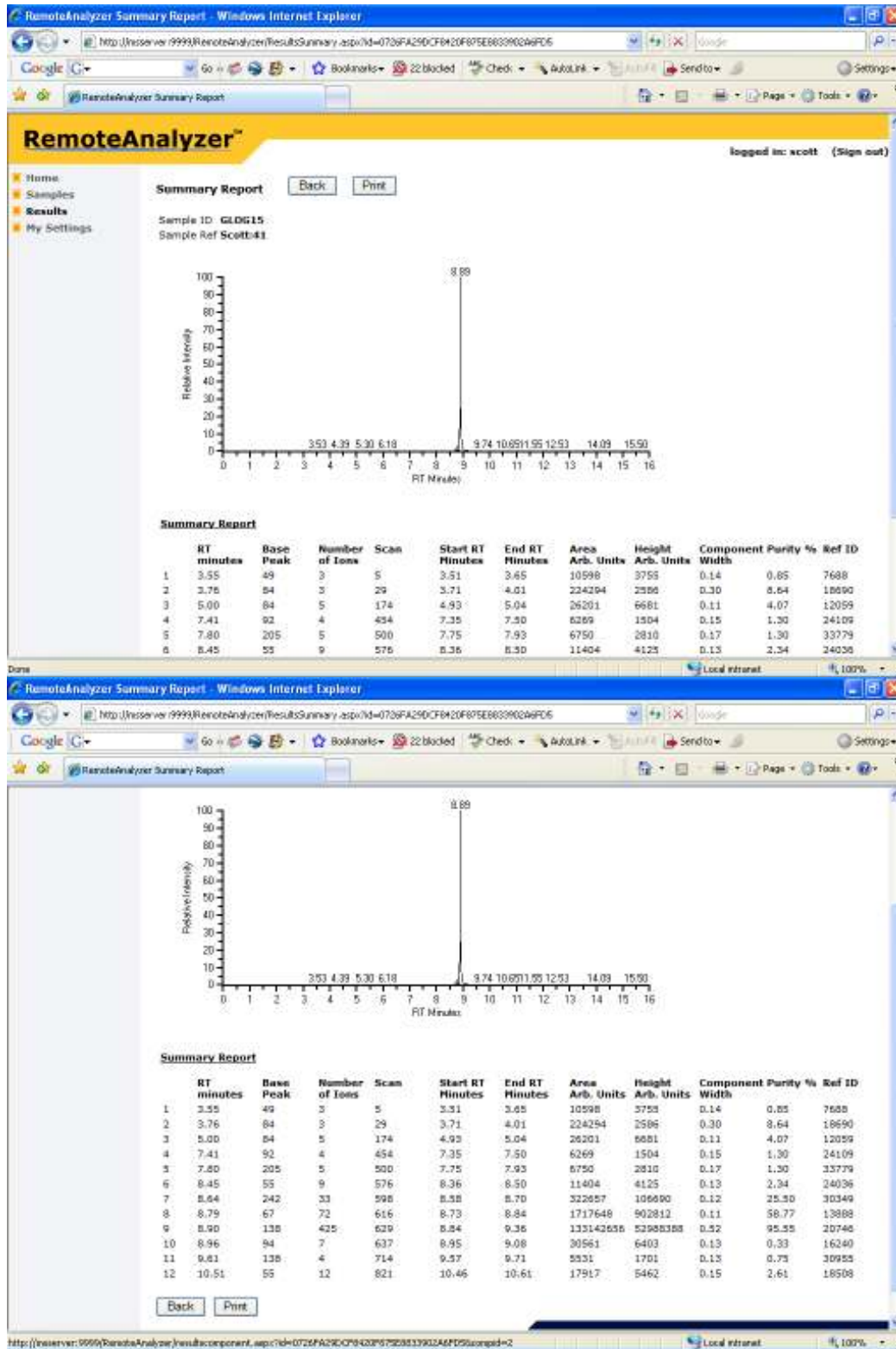
Results
Your results:

Processed On	Instrument	Method	User	Sample ID	Sample Ref	Vial Position
05 February 2007 14:12	GREEN EI/CI GCMS	EIMS	Scott	GLOG15	Scott:41	18
05 February 2007 12:06	RED EI Only GCMS	EIonlyMS	Scott	Sample 2	Scott:43	65
05 February 2007 11:41	RED EI Only GCMS	EIonlyMS	Scott	Sample 1	Scott:42	64
05 February 2007 10:11	GREEN EI/CI GCMS	EIMS	Scott	GLOG15	Scott:41	18
05 February 2007 17:41	GREEN EI/CI GCMS	EIMS	Scott	GLOG15	Scott:41	18
05 February 2007 17:18	GREEN EI/CI GCMS	EIMS	Scott	GLOG15	Scott:41	18
05 February 2007 16:55	GREEN EI/CI GCMS	EIMS	Scott	GLOG15	Scott:41	18
05 February 2007 16:15	GREEN EI/CI GCMS	EIMS	Scott	GLOG15	Scott:41	18
05 February 2007 15:51	GREEN EI/CI GCMS	EIMS	Scott	GLOG15	Scott:41	18
05 February 2007 15:27	GREEN EI/CI GCMS	EIMS	Scott	GLOG15	Scott:41	18

<< Prev Next >>

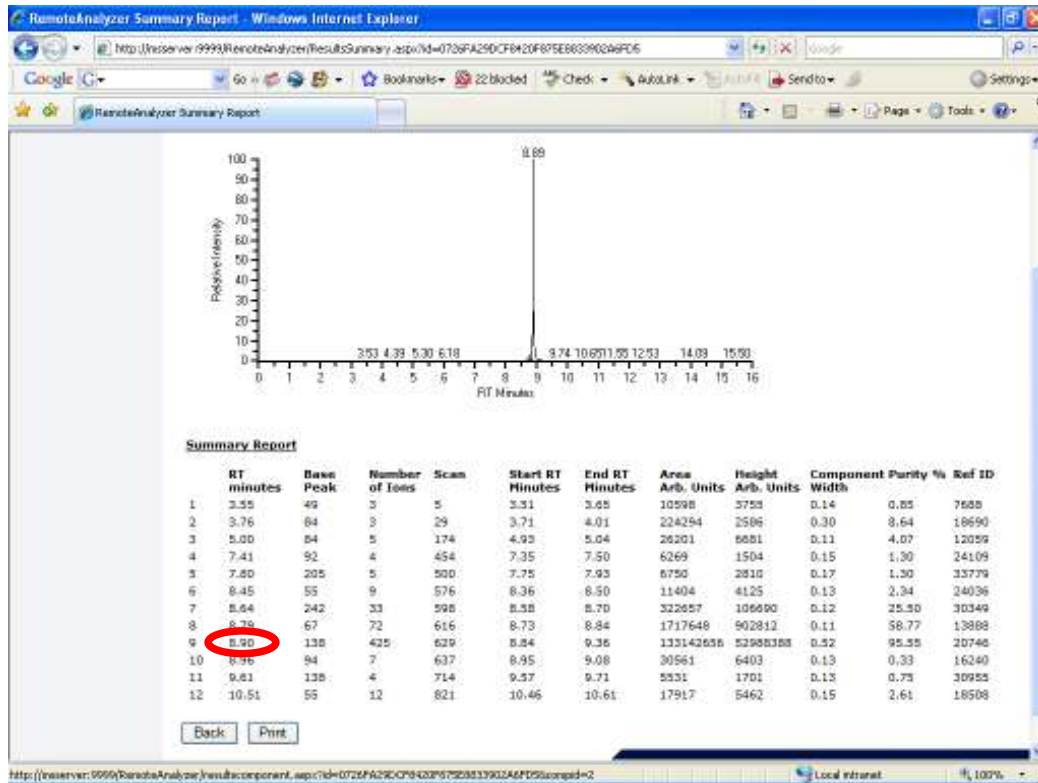
Copyright © 2005-2007 SpectralWorks Ltd. All Rights Reserved
www.spectralworks.com

RemoteAnalyzer (RA) Data Review

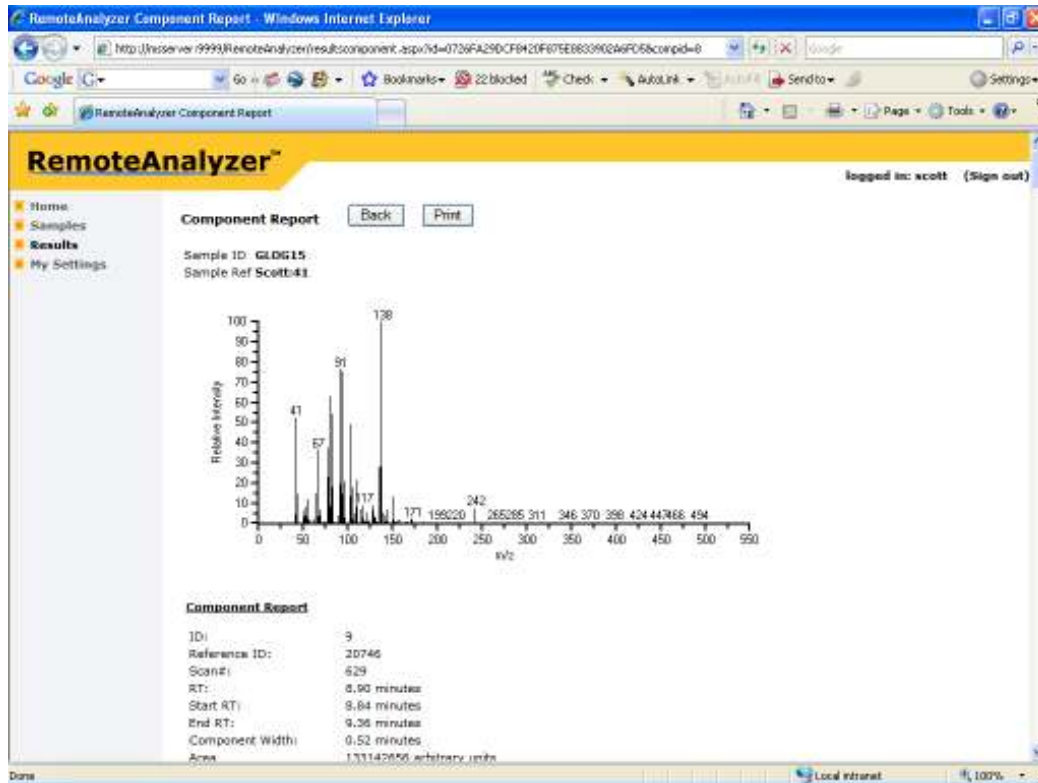


To view the mass spectrum for a given peak in the chromatogram box, click on the retention time (RT minutes). E.g. for the largest peak in this example chromatogram this is 8.90 minutes. (Note the largest peak can also be identified by the largest number for Area or Height.)

RemoteAnalyzer (RA) Data Review



This takes you to the spectrum viewer



A list of the ions and abundances is also given at this stage. When you have finished viewing your data please sign out.

RemoteAnalyser (RA) Data Review

Note the software that processes the data will deconvolve all peaks in the chromatogram, there should be no need to reprocess the data. In the event that the automated processing has missed a peak please see us.

All data is archived and can be retrieved when required.